



THE VALE
LONDON

Sloane Stripe 0122-FAB-SLDE05 Deep Sea

Our Sloane Stripe drapery is for those who crave a little pomp and circumstance. Updated in four ethereal colours, this traditional ticking stripe stands apart because of its silk and linen blend. Unlike most cottons, the linen creates a subtle slub across the weft, while the silk gives it an unmistakably lustrous finish. A juxtaposition of strength and elegance, this timeless drapery is the epitome of luxury, and it effortlessly coordinates with the full Sloane collection.

Pattern: Stripe

Colour: Teal, Deep Sea, Forest, Poseidon, Blue, Green

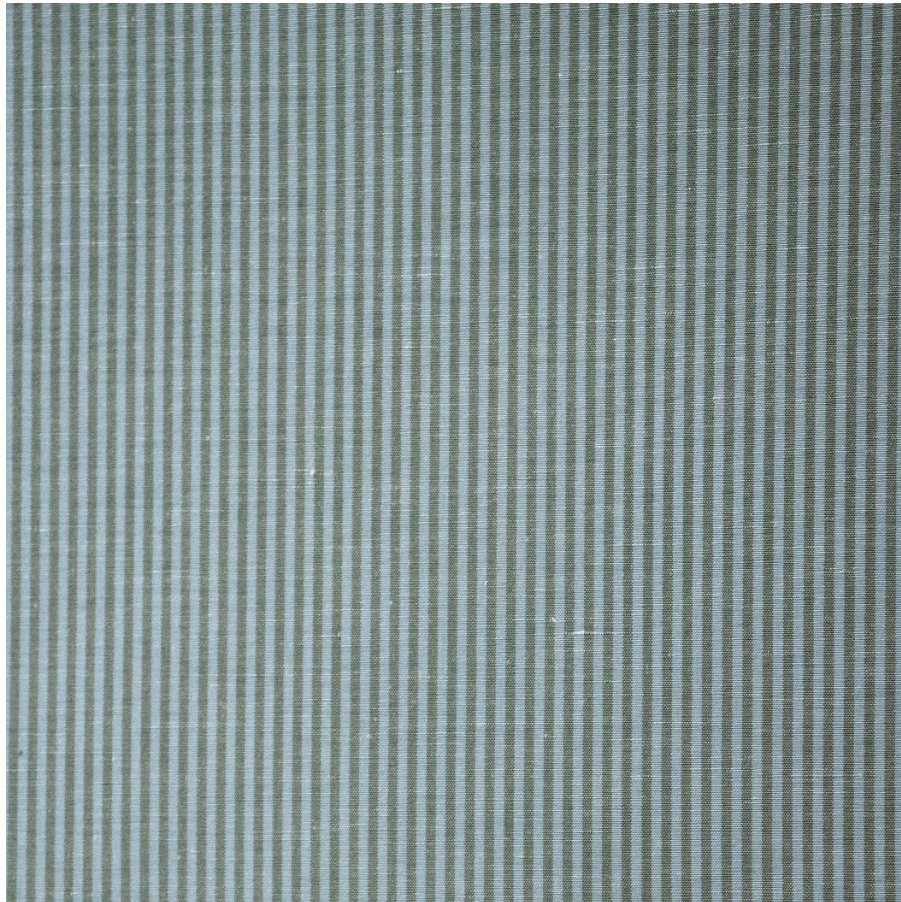
Composition: 41% Silk, 59% Linen

Width: 139cm / 54.7"

Cleaning: Dry Clean Only

Uses: Drapery

Collection: The Sloane Collection



The Vale London

UK: +44 (0) 203 885 0870

USA: +1 (855) 817 5854

contact@thevalelondon.co.uk