



THE VALE
LONDON

Kubb K003 Sage

The inspiration for Kubb comes from the traditional Kuba cloth of western Africa. Kuba textiles are unique to the Democratic Republic of Congo. Within this culture, the creation of textiles is shared between men and women. To start, raffia leaves are collected by the men who strip palm leaves and dye them using natural colours from the earth. They proceed by rubbing the raffia strands between their hands to soften the fibres before weaving them on an inclined heddle loom. The women are responsible for transforming the raffia cloth into various forms of textiles, including ceremonial skirts, tribute cloths and basketry.

Kubb utilises the primitive shapes and simple geometrics of the traditional Kuba cloth but in an updated and modern colour palette. The base cloth is a ribbed cotton screen printed with this season's soft and liveable colours. This pattern is suitable for upholstery and coordinates well with Panamania.

Pattern: Geometric
Colour: Forest, Sage, Fern, Green, Cream
Composition: 100% Cotton
Width: 139cm / 54.7"
Horizontal Repeat: 68.5cm / 27.0"
Vertical Repeat: 90cm / 35.4"
Cleaning: Dry Clean Only
Uses: Multipurpose, 27,000 Martindale
Collection: The Oakley Collection

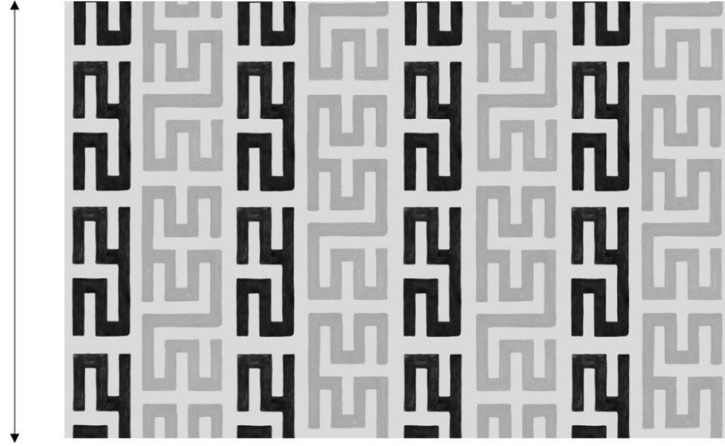
The Vale London

UK: +44 (0) 203 885 0870
USA: +1 (855) 817 5854
contact@thevalelondon.co.uk

Horizontal Repeat: 68.5cm / 27"



Vertical Repeat: 90cm / 35.4"



The Vale London

UK: +44 (0) 203 885 0870
USA: +1 (855) 817 5854
contact@thevalelondon.co.uk