



THE VALE
LONDON

Diana Stripe 0125-FAB-DSCL-03 Claret

Originally launched in soft pastel hues as part of the Beaufort collection in 2020, Diana Stripe remains a favourite among luxury interior designers. Initially available in a single colour, its popularity has inspired the addition of three new shades: Noir, Claret, and Blueberry. Blueberry features the same crisp, bright white linen ground as the original, while Noir and Claret are set against an oatmeal ground, matching the rest of the collection's intense, dark, and moody palette.

Diana Stripe is a versatile fabric, featuring a soft, multicoloured mid-scale geometric pattern. This multipurpose textile is ideal for creating elegant curtains and sophisticated upholstery, adding style and grace to any interior. Originally hand-painted in watercolour and translated into a digitally printed textile, Diana Stripe ensures that every brushstroke is visible in the final product. The addition of these new colours enhances the collection, making Diana Stripe a timeless choice for luxury interiors.

Pattern: Geometric

Colour: Claret, Dune, Pomegranate, Beige, Orange, Purple, Oxblood, Red

Composition: 100% Linen

Width: 150cm / 59.1"

Horizontal Repeat: 36.7cm / 14.4"

Vertical Repeat: 44cm / 17.3"

Cleaning: Washable 30°C

Uses: Multipurpose, 17,000 Martindale

Collection: The Maddox Collection

The Vale London

UK: +44 (0) 203 885 0870

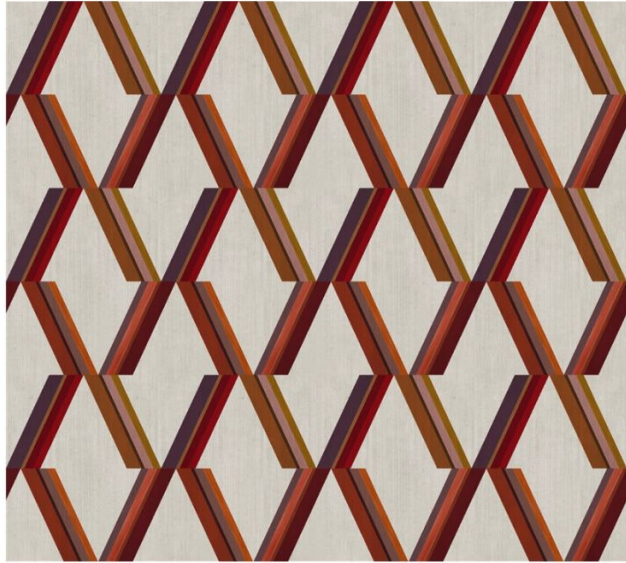
USA: +1 (855) 817 5854

contact@thevalelondon.co.uk

Horizontal Repeat: 36.7cm / 14.4"



Vertical Repeat: 44cm / 17.3"



The Vale London

UK: +44 (0) 203 885 0870
USA: +1 (855) 817 5854
contact@thevalelondon.co.uk