



THE VALE
LONDON

Diana Stripe DS008 Candyfloss

Graphic and effortlessly stylish, Diana Stripe is a whimsical coordinate to all patterns in the collection, bringing the soft pastel tones together into one bright and airy linen print. Restful tones of dusty pastels create a subtle focal point for your space. Printed on pure linen for a sharp and chic finish.

Pattern: Geometric

Colour: Lilac, Pink, Multicolour, Pristine, White, Haze, Light Blue, Blue, Light Green, Green

Composition: 100% Linen

Width: 150cm / 59.1"

Horizontal Repeat: 36.7cm / 14.4"

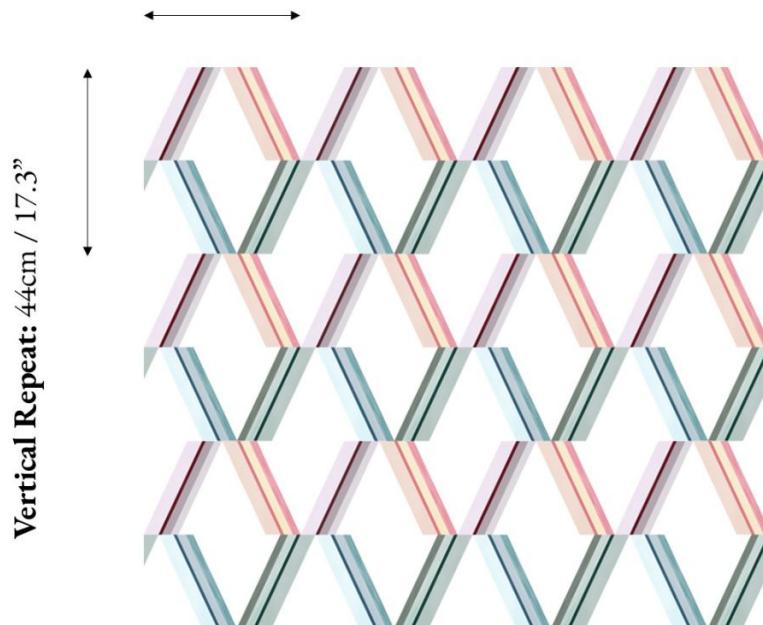
Vertical Repeat: 44cm / 17.3"

Cleaning: Washable 30°C

Uses: Multipurpose, 18,000 Martindale

Collection: The Beaufort Collection

Horizontal Repeat: 36.7cm / 14.4"



The Vale London

UK: +44 (0) 203 885 0870

USA: +1 (855) 817 5854

contact@thevalelondon.co.uk