



THE VALE  
LONDON

## Acanthus 0123-FAB-ACFO-01 Forest

Acanthus leaves have long been an ornamental element in Roman architecture and interior design, the earliest known example being the Temple of Apollo Epicurius at Bassae (450-420 BC). Carved into stone throughout ancient Greece, particularly in Corinthian columns and friezes, and flowering from the crowns of great emperors, Acanthus is a modern take on the vining motif. Identical to the Tendril wallcovering in terms of its leafy repeat, this multipurpose linen fabric is embroidered with metallic thread and cording and comes in 3 organic colourways.

**Pattern:** Floral, Stripe

**Colour:** Forest, Pristine, White, Fern, Green

**Composition:** 100% Linen. Embroidery: 65% Metallic, 25% Rayon, 10% Polyester

**Width:** 134cm / 52.8"

**Horizontal Repeat:** 131cm / 51.6"

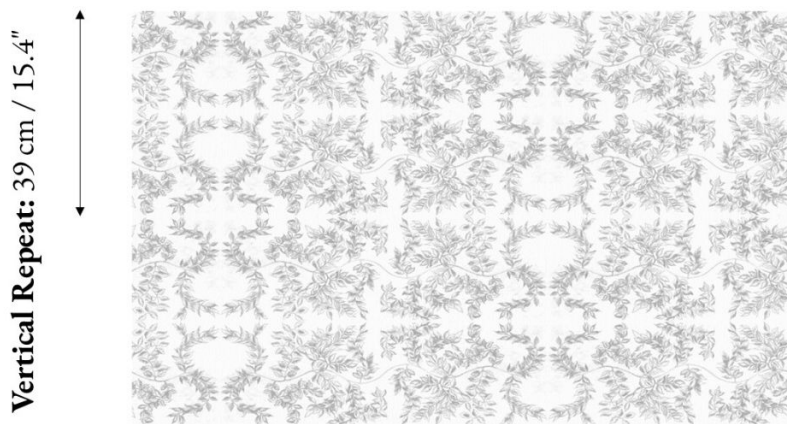
**Vertical Repeat:** 39cm / 15.4"

**Cleaning:** Dry Clean Only

**Uses:** Drapery

**Collection:** The Hyde Collection

**Horizontal Repeat:** 131 cm / 51.6"



UK: +44 (0) 203 885 0870

USA: +1 (855) 817 5854

contact@thevalelondon.co.uk